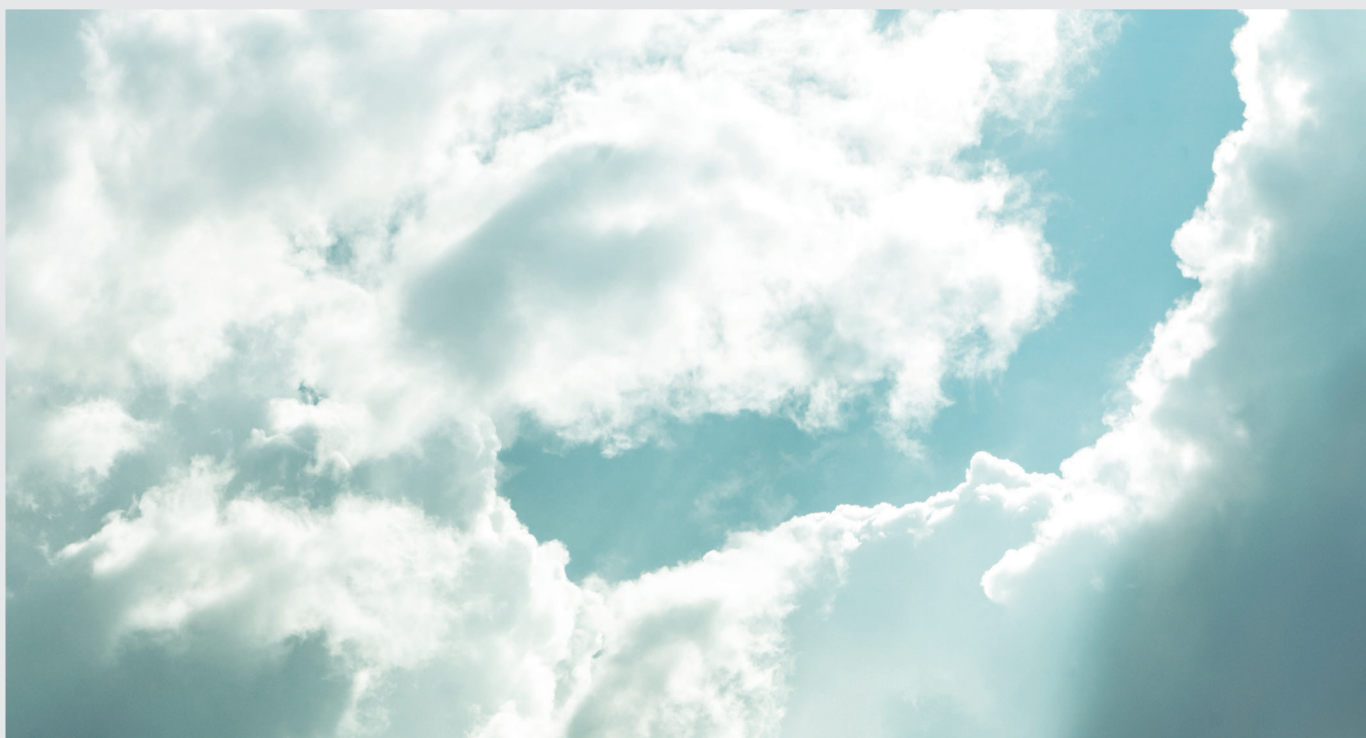


Core Multi-asset Solution (CMS)

Diversified global market exposure with cost-effective implementation



Global
multi-asset



Multi-strategy



Strategic



Cost-efficient
investing

We believe it's impossible to consistently and accurately predict market movements or fluctuations, so we think playing the long game – by investing and staying invested – is the best way to ensure you don't miss out. Every investment portfolio should be managed to a long-term investment plan, aligned with the investor's objectives and tolerance for risk, with diversification as a key concept in order to achieve these.

CMS is a multi-asset solution which enables you to delegate the management of your investment portfolio to a professional investment manager, thus freeing you from the day-to-day burden of portfolio management which may deserve more time and attention than you are able to commit.

CMS provides considerable strategic flexibility, allowing you to select the investment solution that best matches your risk appetite and long-term investment goals. This is achieved using carefully constructed, globally diversified portfolios of equity and bond allocations with the added option of exposure to alternative investment strategies where they are suitable.¹ This gives you a highly liquid, professionally managed, alpha-seeking investment portfolio.

¹Investments take into consideration your stated investment objectives, willingness and ability to bear loss and your knowledge and understanding of products to ensure that they are suitable for you.



HSBC
Private Banking

Active Management: Long-term strategy with tactical thinking

CMS is actively managed using a combination of an adaptable Strategic Asset Allocation (SAA), tactical adjustments and careful portfolio construction.

CMS, like all our multi-asset solutions is underpinned by our SAA. By carefully and continuously analysing asset classes around the globe, we form a view regarding their future expected returns. Our SAA encompasses what we believe is the optimal allocation to asset classes given certain risk allowances. Our SAA is therefore the foundation of your long-term investment plan and is the long-term ‘anchor’ of the portfolio we construct for you.

As the asset-class valuations change with the business cycle or extraordinary events, these can present both upside opportunities and risks to your capital. The CMS investment manager – through careful analysis and research – is able to make shorter-term, measured shifts in the portfolio’s positioning to capitalise on, or minimise the effect of these market events, whilst remaining aligned with your risk appetite.

Strategy



HSBC SAA



Tactical
Macro Overlay



Disciplined
Rebalancing

Asset fulfilment



ETFs



HSBC
Managed Funds



Non HSBC
Managed Funds

Portfolio construction

To minimise the costs of investing, we’ll build your portfolio mostly with low-cost instruments that track conventional market indices, designed to offer more attractive return streams to your portfolio. These typically include a blend of exchange traded funds (ETFs), tracker funds and zero-management fee HSBC-managed funds.

Risk management is also fully integrated into this investment process and, to this end, portfolio positioning is monitored on a daily basis.

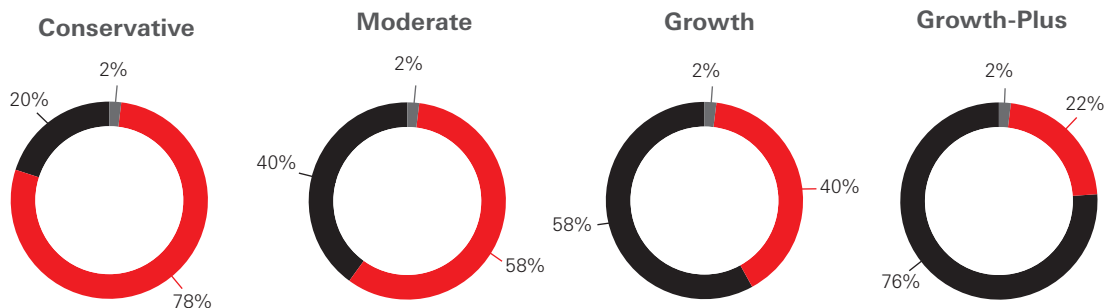
The optional exposure to alternative investment strategies provides additional uncorrelated return streams within your portfolio.



Investment strategies

USD without alternatives

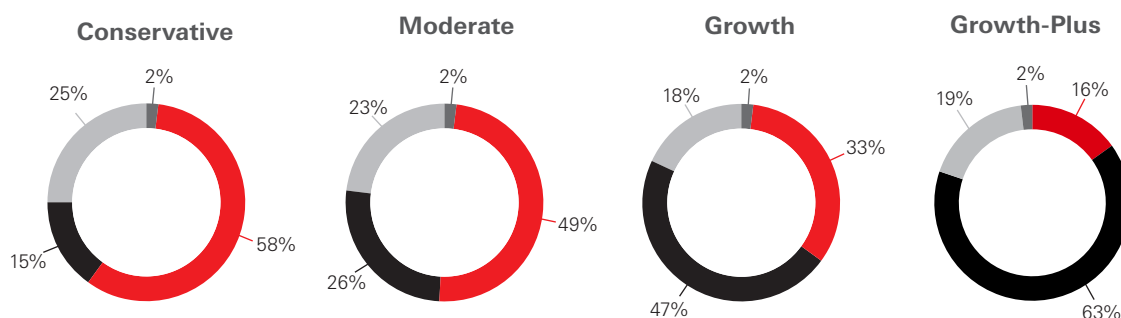
◆ Fixed income ◆ Equity ◆ Cash



Lower ————— Risk & potential returns ————— Higher

USD with alternatives

◆ Fixed income ◆ Equity ◆ Cash ◆ Alternatives



Lower ————— Risk & potential returns ————— Higher

This chart sets out the proposed allocation for the strategy as at March 2019. This is for information only and may not represent the actual construction of the resulting portfolio.

Programme features

Geography	Global and regional variances available.
Investment strategies available	Conservative, Moderate, Growth, Growth-Plus. Option with and without alternatives available for each profile.
Reference currencies (local availability may vary)	USD, GBP, EUR, CHF.
Minimum investment	USD 1,000,000 or currency equivalent.
Income distribution	Accumulating or Distributing.
Liquidity	Daily.

Speak to your Relationship Manager today to see how a CMS portfolio could benefit you.

Risk disclosures

This document is not intended to be read on its own. It must be read in conjunction with the pitchbook and other relevant documents before investors make (an) investment decision(s). Please request the pitchbook and other relevant documents if you do not already have them.

The following important points should be considered before investing. All investments should also be considered in light of your current strategy and your long-term objectives. A full list of risks is included in the pitchbook.

The list of risks is not exhaustive and includes: investment risk, emerging market risks, currency risk, interest rate risk, liquidity risk and passive investment risk.

Alternative investments, such as private equity funds, hedge funds, real estate funds, and **Derivative instruments** are generally considered as high risk investments, and therefore intended for experienced and financially sophisticated investors who are willing and able to bear the risks associated with such investments.

Important notice

The following may be subject to local requirements:

This is a marketing communication issued by **HSBC Private Banking**. This document does not constitute independent investment research under the European Markets in Financial Instruments Directive ('MiFID'), or other relevant law or regulation, and is not subject to any prohibition on dealing ahead of its distribution. HSBC Private Banking is the principal private banking business of the HSBC Group. Private Banking may be carried out internationally by different HSBC legal entities according to local regulatory requirements. Different companies within HSBC Private Banking or the HSBC Group may provide the services listed in this document. Some services are not available in certain locations. Members of the HSBC Group may trade in products mentioned in this publication.

This document is provided to you for your information purposes only and should not be relied upon as investment advice. The information contained within this document is intended for general circulation to HSBC Private Banking clients and it has not been prepared in light of your personal circumstances (including your specific investment objectives, financial situation or particular needs) and does not constitute a personal recommendation, nor should it be relied upon as a substitute for the exercise of independent judgement. This document does not constitute and should not be construed as legal, tax or investment advice or a solicitation and/or recommendation of any kind from the Bank to you, nor as an offer or invitation from the Bank to you to subscribe to, purchase, redeem or sell any financial instruments, or to enter into any transaction with respect to such instruments. The content of this document may not be suitable for your financial situation, investment experience and investment objectives, and the Bank does not make any representation with respect to the suitability or appropriateness to you of any financial instrument or investment strategy presented in this document.

If you have concerns about any investment or are uncertain about the suitability of an investment decision, you should contact your Relationship Manager or seek such financial, legal or tax advice from your professional advisers as appropriate.

Market data in this document is sourced from Bloomberg unless otherwise stated. While this information has been prepared in good faith including information from sources believed to be reliable, no representation or warranty, expressed or implied, is or will be made by HSBC Private Banking or any part of the HSBC Group or by any of their respective officers, employees or agents as to or in relation to the accuracy or completeness of this document.

It is important to note that the capital value of, and income from, any investment may go down as well as up and you may not get back the original amount invested. Past performance is not a guide to future performance. Forward-looking statements, views and opinions expressed and estimates given constitute HSBC Private Banking's best judgement at the time of publication, are solely expressed as general commentary and do not constitute investment advice or a guarantee of returns and do not necessarily reflect the views and opinions of other market participants and are subject to change without notice. Actual results may differ materially from the forecasts/estimates. When an investment is denominated in a currency other than your local or reporting currency, changes in exchange rates may have an adverse effect on the value of that investment. There is no guarantee of positive trading performance.

Foreign securities carry particular risks, such as exposure to currency fluctuations, less developed or less efficient trading markets, political instability, a lack of company information, differing auditing and legal standards, volatility and, potentially, less liquidity.

Investment in emerging markets may involve certain additional risks, which may not be typically associated with investing in more established economies and/or securities markets. Such risks include (a) the risk of nationalization or expropriation of assets; (b) economic and political uncertainty; (c) less liquidity in so far as securities markets; (d) fluctuations in currency exchange rate; (e) higher rates of inflation; (f) less oversight by a regulator of local securities market; (g) longer settlement periods in so far as securities transactions and (h) less stringent laws in so far as the duties of company officers and protection of Investors.

You should contact your Relationship Manager if you wish to enter into a transaction for an investment product. You should not make any investment decision based solely on the content of any document.

Some HSBC Offices listed may act only as representatives of HSBC Private Banking, and are therefore not permitted to sell products and services, or offer advice to customers. They serve as points of contact only. Further details are available on request.

In the United Kingdom, this document has been approved for distribution by HSBC UK Bank plc whose Private Banking office is located at 8 Cork Street, London W1S 3LJ and whose registered office is at 1 Centenary Square, Birmingham, B1 1HQ. HSBC UK Bank plc is registered in England under number 09928412. Clients should be aware that the rules and regulations made under the Financial Services and Markets Act 2000 for the protection of investors, including the protection of the Financial Services Compensation Scheme, do not apply to investment business undertaken with the non-UK offices of the HSBC Group. This publication is a Financial Promotion for the purposes of Section 21 of the Financial Services & Markets Act 2000 and has been approved for distribution in the United Kingdom in accordance with the Financial Promotion Rules by HSBC UK Bank plc, which is authorised by the Prudential Regulation Authority and regulated by the Financial Conduct Authority and the Prudential Regulation Authority.

In Guernsey, this material is distributed by HSBC Private Banking (C.I.) a division of HSBC Bank plc, Guernsey Branch which is licensed by the Guernsey Financial Services Commission for Banking, Insurance and Investment Business. HSBC Bank plc is registered in England and Wales, number 14259. Registered office 8 Canada Square, London, E14 5HQ. HSBC Bank plc is authorised by the Prudential Regulation Authority and regulated by the Financial Conduct Authority and the Prudential Regulation Authority (UK FCA reference number: 114216).

In Jersey Issued by HSBC Private Banking (Jersey) which is a division of HSBC Bank plc, Jersey Branch: HSBC House, Esplanade, St. Helier, Jersey, JE1 1HS. HSBC Bank plc, Jersey Branch is regulated by the Jersey Financial Services Commission for Banking, General Insurance Mediation, Fund Services and Investment Business.

In France, this material is distributed by HSBC France. HSBC Private Banking is the private banking department of the HSBC Group in France. HSBC France is subject to approval and control by the Autorité de Contrôle Prudentiel et de Résolution [Prudential Control and Resolution Authority] as a credit entity. HSBC Private Banking, HSBC France - Public Limited Company with share capital of 474.964.025 €- SIREN 775 670 284 Trade and Companies Register of Paris Bank and Insurance Intermediary registered with the Organisme pour le Registre des Intermédiaires en Assurances [Organisation for the Register of Insurance Intermediaries] under no. 07 005 894 (www.orias.fr) - Intra-community VAT number: FR 707 756 702 84. HSBC Private Banking, HSBC France – Registered office: 103 avenue des Champs-Élysées, 75008 Paris - Postal address: 109 avenue des Champs-Élysées, 75419 Paris Cedex 08, Tel. +33 (0) 1 49 52 20 00.

In Switzerland, this material is distributed by HSBC Private Bank (Suisse) SA, a bank regulated by the Swiss Financial Market Supervisory Authority FINMA, whose office is located at Quai des Bergues 9-17, 1201 Genève, Switzerland. This document does not constitute independent financial research, and has not been prepared in accordance with the Swiss Bankers Association's "Directive on the Independence of Financial Research", or any other relevant body of law.

In Dubai International Financial Center (DIFC) by HSBC Private Bank (Suisse) S.A., DIFC Branch, P.O. Box 506553 Dubai, United Arab Emirates, which is regulated by the Dubai Financial Services Authority (DFSA) and is permitted to only deal with Professional Clients as defined by the DFSA.

In South Africa, this material is distributed by HSBC Private Bank (Suisse) SA's Representative Office approved by the South African Reserve Board (SARB) under registration no. 00252 and authorized as a financial services provider (FSP) for the provision of Advice and Intermediary Services by the Financial Sector Conduct Authority of South Africa (FSCA) under registration no. 49434. The Representative Office has its registered address at 2 Exchange Square, 85 Maude Street, Sandown, Sandton.

In Bahrain and Qatar, this material is distributed by the respective branches of HSBC Bank Middle East Limited, which is locally regulated by the respective local country Central Banks and lead regulated by the Dubai Financial Services Authority.

In Lebanon, this material is distributed by HSBC Financial Services (Lebanon) S.A.L., licensed by the Capital Markets Authority as a financial intermediation company Sub N°12/8/18 to carry out Advising and Arranging activities, having its registered address at Centre Ville 1341 Building, 4th floor, Patriarche Howayek Street, Beirut, Lebanon, P.O.Box Riad El Solh 9597.

In Hong Kong and Singapore, THE CONTENTS OF THIS DOCUMENT HAVE NOT BEEN REVIEWED OR ENDORSED BY ANY REGULATORY AUTHORITY IN HONG KONG OR SINGAPORE. HSBC Private Banking is a division of Hongkong and Shanghai Banking Corporation Limited. In Hong Kong, this document has been distributed by The Hongkong and Shanghai Banking Corporation Limited in the conduct of its Hong Kong regulated business. In Singapore, the document is distributed by the Singapore Branch of The Hongkong and Shanghai Banking Corporation Limited. Both Hongkong and Shanghai Banking Corporation Limited and Singapore Branch of Hongkong and Shanghai Banking Corporation Limited are part of the HSBC Group. This document is not intended for and must not be distributed to retail investors in Hong Kong and Singapore. The recipient(s) should qualify as professional investor(s) as defined under the Securities and Futures Ordinance in Hong Kong or accredited investor(s) or institutional investor(s) or other relevant person(s) as defined under the Securities and Futures Act in Singapore. Please contact a representative of The Hong Kong and Shanghai Banking Corporation Limited or the Singapore Branch of The Hong Kong and Shanghai Banking Corporation Limited respectively in respect of any matters arising from, or in connection with this report. Some of the products are only available to professional investors as defined under the Securities and Futures Ordinance in Hong Kong / accredited investor(s), institutional investor(s) or other relevant person(s) as defined under the Securities and Futures Act in Singapore. Please contact your Relationship Manager for more details.

Where we make any solicitation and/or recommendation in Hong Kong to you for a Financial Product (as defined in HSBC's Standard Terms and Conditions) where this is permitted by cross border rules depending on your place of domicile or incorporation, we will take reasonable steps to ensure the suitability of the solicitation and/or recommendation. In all other cases, you are responsible for assessing and satisfying yourself that any investment or other dealing to be entered into is in your best interest and is suitable for you.

In all cases, we recommend that you make investment decisions only after having carefully reviewed the relevant investment product and offering documentation, HSBC's Standard Terms and Conditions, the "Risk Disclosure Statement" detailed in the Account Opening Booklet, and all notices, risk warnings and disclaimers contained in or accompanying such documents and having understood and accepted the nature, risks of and the terms and conditions governing the relevant transaction and any associated margin requirements. In addition to any suitability assessment made in Hong Kong by HSBC (if any), you should exercise your own judgment in deciding whether or not a particular product is appropriate for you, taking into account your own circumstances (including, without limitation, the possible tax consequences, legal requirements and any foreign exchange restrictions or exchange control requirements which you may encounter under the laws of the countries of your citizenship, residence or domicile and which may be relevant to the subscription, holding or disposal of any investment) and, where appropriate, you should consider taking professional advice including as to your legal, tax or accounting position. Please note that this information is neither intended to aid in decision making for legal or other consulting questions, nor should it be the basis of any such decision. If you require further information on any product or product class or the definition of Financial Products, please contact your Relationship Manager.

In Luxembourg, this material is distributed by HSBC Private Banking (Luxembourg) SA, which is located at 16, boulevard d'Avranches, L-1160 Luxembourg and is regulated by the Commission de Surveillance du Secteur Financier ("CSSF").

In the United States, HSBC Private Banking offers banking services through HSBC Bank USA, N.A. – Member FDIC and HSBC Private Bank International, and provides securities and brokerage services through HSBC Securities (USA) Inc., member NYSE/ FINRA/SIPC, and an affiliate of HSBC Bank USA, N.A.

Investment products are: Not a deposit or other obligation of the bank or any affiliates; Not FDIC insured or insured by any federal government agency of the United States; Not guaranteed by the bank or any of its affiliates; and are subject to investment risk, including possible loss of principal invested.

Australia If you are receiving this document in Australia, the products and services are provided by The Hongkong and Shanghai Banking Corporation Limited (ABN 65 117 925 970, AFSL 301737) for "wholesale" customers (as defined in the Corporations Act 2001). Any information provided is general in nature only and does not take into account your personal needs and objectives nor whether any investment is appropriate. The Hongkong and Shanghai Banking Corporation Limited is not a registered tax agent. It does not purport to, nor does it, give or provide any taxation advice or services whatsoever. You should not rely on the information provided in the documents for ascertaining your tax liabilities, obligations or entitlements and should consult with a registered tax agent to determine your personal tax obligations.

Where your location of residence differs from that of the HSBC entity where your account is held, please refer to the Disclaimer at <http://www.hsbcprivatebank.com/en/utilities/cross-border-disclosure> for disclosure of cross-border considerations regarding your location of residence.

No part of this publication may be reproduced, stored in a retrieval system, or transmitted, on any form or by any means, electronic, mechanical, photocopying, recording or otherwise, without the prior written permission of HSBC UK Bank plc.

A complete list of private banking entities is available on our website, www.hsbcprivatebank.com.

©Copyright HSBC 2019 ALL RIGHTS RESERVED